

INDUSTRIAL BUILDING w DRIVE-IN BAYS

50 Lowell Street, Peabody MA 01960

FOR SALE



50 Lowell Street in Peabody is located between downtown and the Route 128 interchange, accessible by two curb cuts and features off-street parking and 2-way marquee signage. Currently a mechanics / repair facility, but the current zoning lends itself to a myriad of retail uses. With 115 +/- feet of frontage and 22,919 vehicles per day, this parcel is prime for a mixed-use re-development opportunity.

DISCLOSURE Subject to errors, omissions, prior sale or withdrawal from the market. Broker cannot guarantee utilities to be completely separate and makes no warranty or representation, expressed or implied, as to the accuracy of the information contained herein. Brian DApice & Associates LLC (d/b/a The Mega Group) is a Massachusetts Limited Liability Corporation. MA License #422172.



The Mega Group - Commercial Real Estate
7 Federal Street, Suite 15 • Danvers, MA 01923
(978)762-9771

www.TheMegaGroup.net

INDUSTRIAL BUILDING w FOUR DRIVE-IN BAYS

50 Lowell Street, Peabody MA

Property Address	50 Lowell Street Peabody, MA 01960
Access	Route 128 / Downtown
Zoning	BC (Central Business)
Land Area	11,247 +/- SF (.26 acres)
Frontage	115 +/- feet
Access / Parking	2 curb cuts, 16 parking spaces
Current Use	Mechanics / Repair
Allowed Uses	General Retail, Restaurant, Restaurant w Drive-Thru, Banking, Professional Office, Medical, Personal Services



DEMOGRAPHICS - IN DRIVE TIMES

POPULATION



1 Mile: 21,023
3 Miles: 111,858
5 Miles: 286,201

AVERAGE INCOME / HH



1 Mile: 78,026
3 Miles: 86,527
5 Miles: 94,105

DAYTIME POPULATION

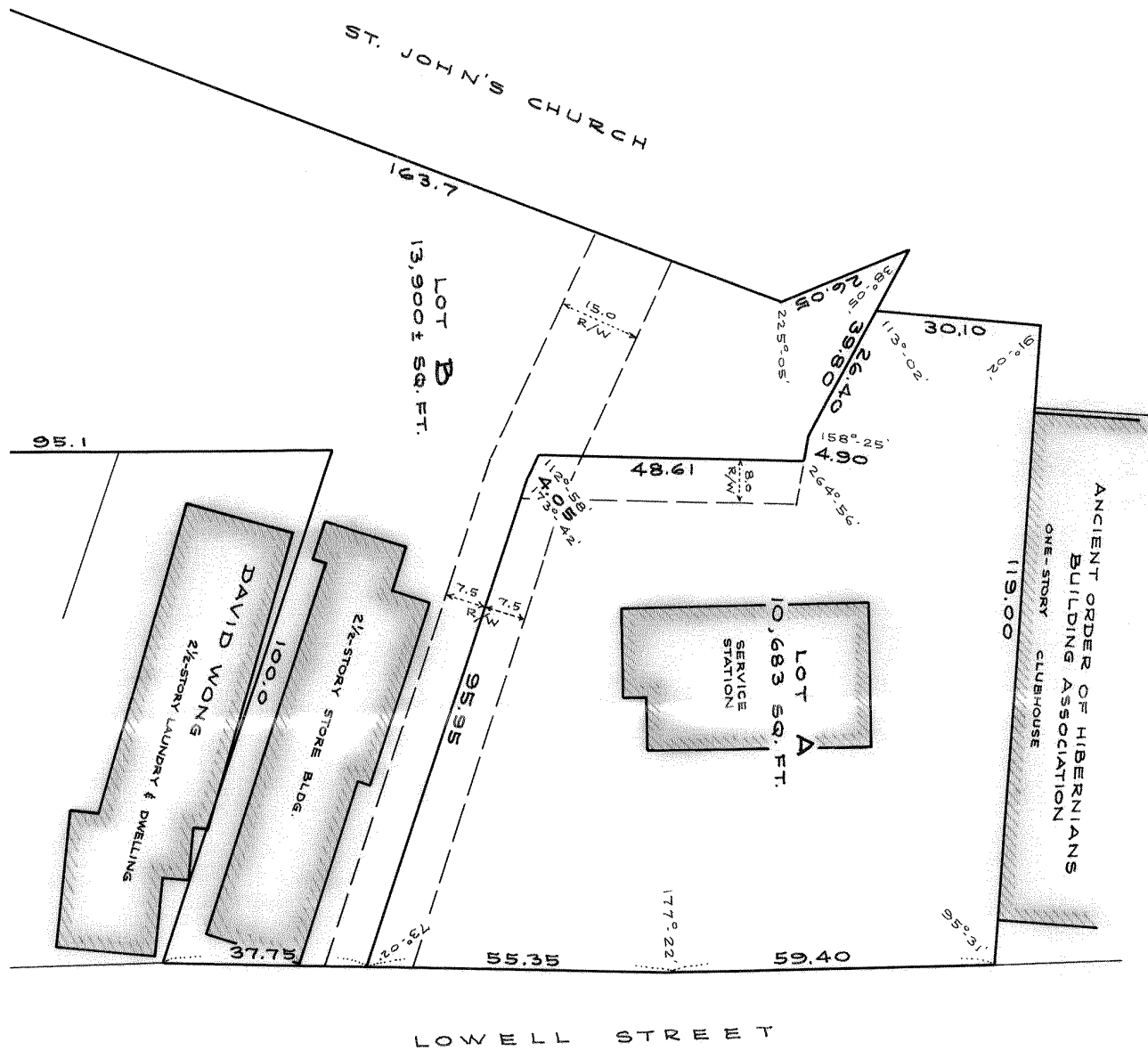


1 Mile: 6,272
3 Miles: 68,311
5 Miles: 146,125

TRANSPORTATION



22,919 at Lowell Street
40,828 at Andover Street
Logan Airport - 14.2 mi



The Property is situated on 11,247 +/- square feet of land, improved by one industrial/warehouse style building about 3,844 +/- square feet in size, about 62' wide by 62' long with four (4) garage bays. There are three (3) drive-in bays on the front and one (1) on the side. The front features twin 10' wide by 9' high roll-up doors and a 10' wide by 12' high rollup-door. The side also being a 10' wide by 12' high rollup-door. The twin bay portion is the original section and is about 10' clear height, the addition wraps-around and is about 14' clear height.

INDUSTRIAL BUILDING w FOUR DRIVE-IN BAYS

50 Lowell Street, Peabody MA





The Mega Group

Commercial Real Estate

The Mega Group, based in Danvers, MA has been providing commercial real estate brokerage services since 1997. Our areas of discipline include commercial & investment sales, retail & office leasing, real estate development and property management. Covering greater metropolitan Boston Massachusetts, coastal New Hampshire & southern Maine.

The Mega Group offers a wide range of services, which include:

- Retail Properties
- Multi-Family Investment Properties
- Investment Portfolios
- Apartment Communities
- Manufacturing & Warehouse Facilities
- Hospitality - Hotels & Inns
- Real Estate Development
- Retail Pad Sites
- NNN Ground Leased Properties
- Business Brokerage Services
- 1031 Tax Deferred Exchanges (26 U.S.C. § 1031)



JENNIFER DAPICE

Director, Lead Agent

(508) 612-3767

Jennifer@TheMegaGroup.net



BRIAN DAPICE

Principal

(978) 609-1339

Brian@TheMegaGroup.net